

2212 Tiger Road

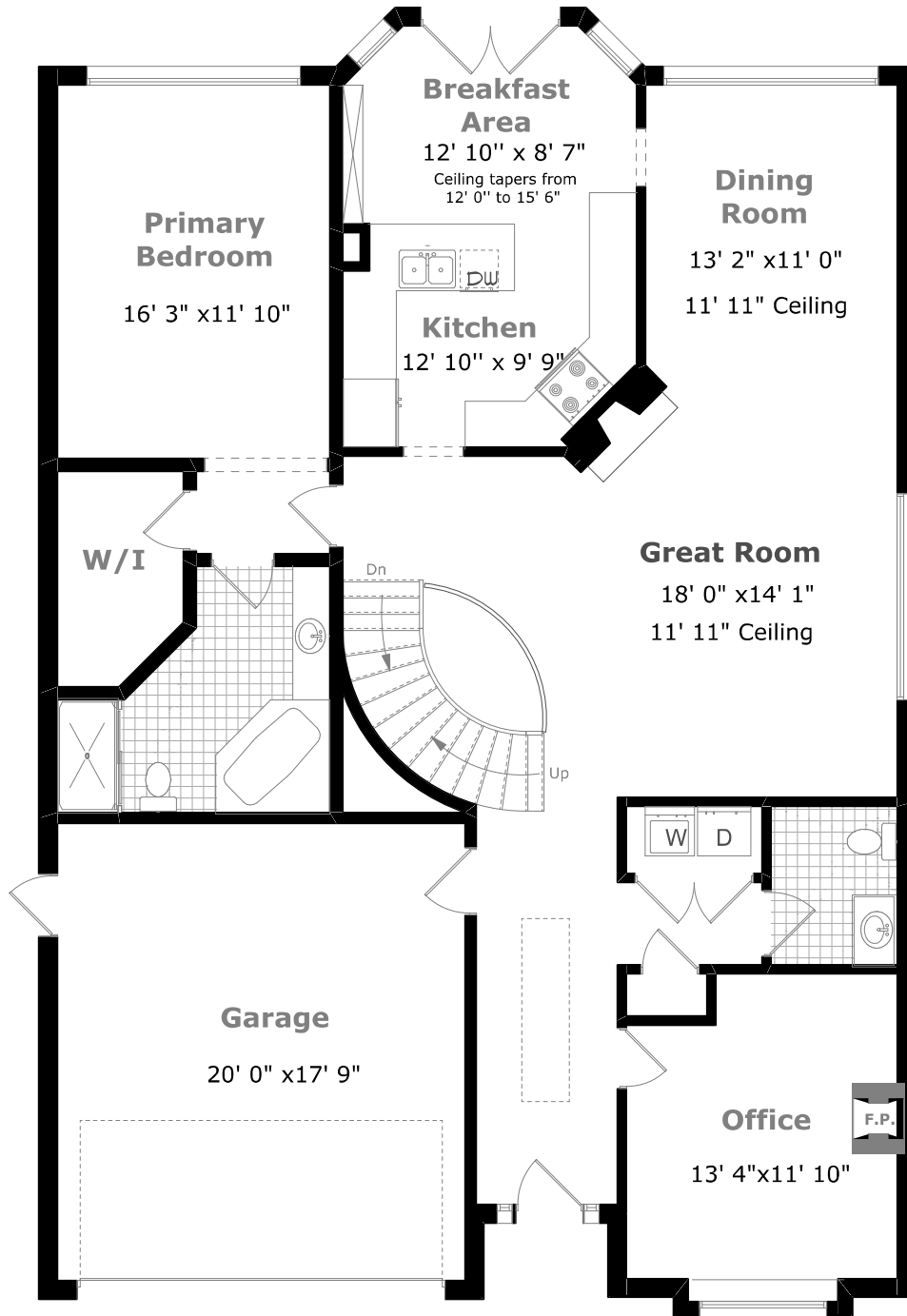
Scale (ft)



Scale (M)



June 2022



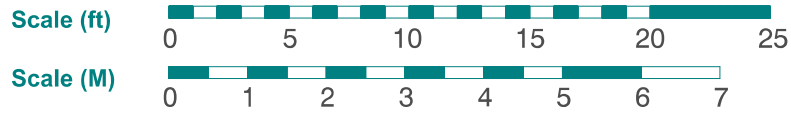
Main Floor Plan

1,696.3 sq. ft. +
391.7 sq. ft. (Garage)
9' 0" Ceiling

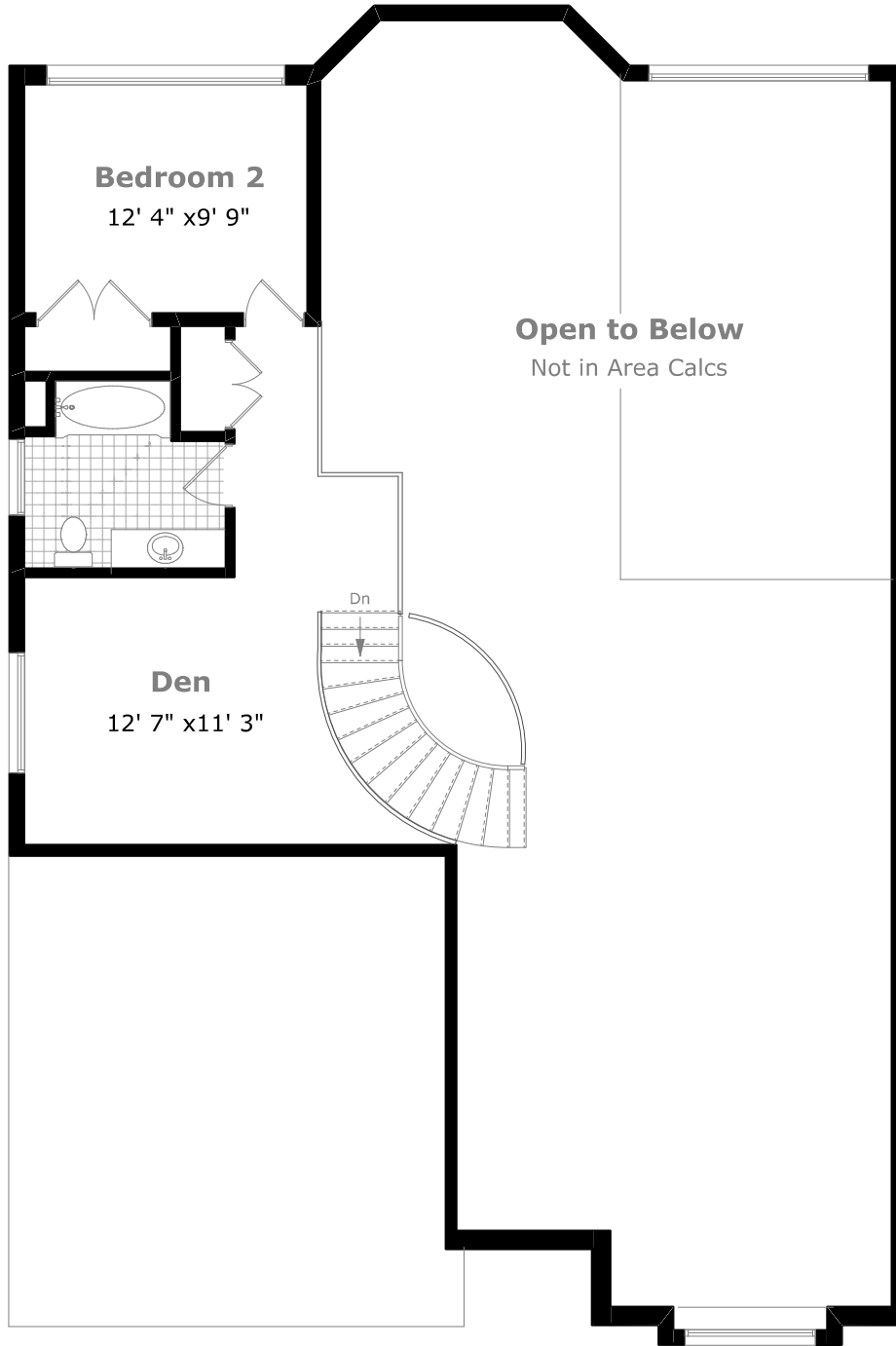


Measurements may not be 100% accurate. Floor Plans provided for illustrative purposes only. Room sizes not used to calculate area.

2212 Tiger Road



June 2022



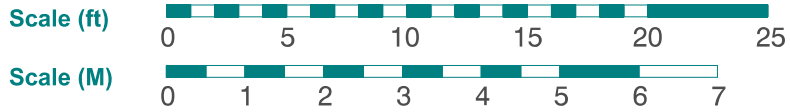
2nd Floor Plan

521.5 sq. ft.

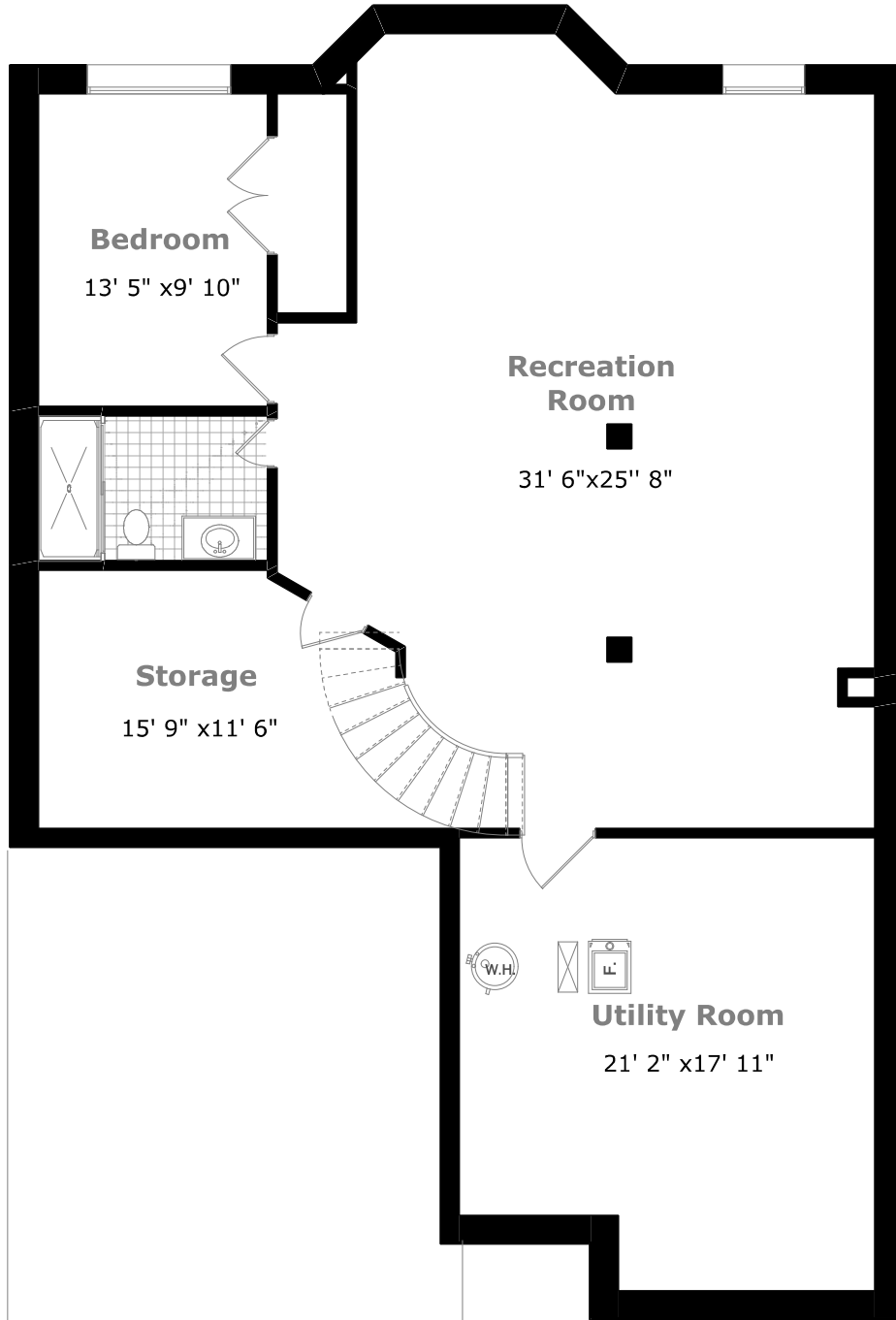


Measurements may not be 100% accurate. Floor Plans provided for illustrative purposes only. Room sizes not used to calculate area.

2212 Tiger Road



June 2022



Lower Level Plan

1,696.3 sq. ft.



Measurements may not be 100% accurate. Floor Plans provided for illustrative purposes only. Room sizes not used to calculate area.